

# Return to School – Fall 2020

## EXPOSURE AND SYMPTOMS GUIDANCE

### EXPERIENCING SYMPTOMS WITHOUT A KNOWN EXPOSURE

The following are guidelines for a student or staff member who is experiencing symptoms.

- If you are experiencing symptoms, you are encouraged to seek COVID testing. For testing, contact your physician or the FDL County COVID Clinic at 844-225-0147.
- If you receive a **positive test result**: stay home for at least 10 days\*. You must also be fever-free without the use of fever-reducing medication for 24 hours **and** see improvement in other symptoms.
- If you receive a **negative test result**: you may return once you have been fever-free without the use of fever-reducing medication **and** symptom-free for 24 hours.
- If COVID-19 symptoms are present but you are not tested, you must stay home/isolate for 10 days\*.

### EXPOSED TO POSITIVE COVID-19

The following are guidelines for a student or staff member who has been exposed to someone with a positive COVID-19 test. **REFER TO FLOW CHARTS (PG 3)**.

- If you have come into contact with someone who has tested positive, you should quarantine for 7-14 days\* starting from the date of your last contact with the person who tested positive for COVID-19.
- If someone in your home tests positive, you should quarantine while they are sick and continue to quarantine for an additional 7-14 days\* after they are no longer infectious.
- If you are experiencing symptoms, you are encouraged to seek COVID testing. For testing, contact your physician or the COVID Clinic at 844-225-0147.

### SYMPTOMS AT SCHOOL

The following are guidelines for a student or staff member who is exhibiting symptoms of COVID-19 while at school. **REFER TO FLOW CHARTS (PG 2)**.

#### Student:

- Student reports symptoms to staff member or staff member observes symptoms.
- Student will be sent to health isolation room.
- Parent/guardian will be notified and should arrive to pick up student as soon as possible.
- Student will need to stay home isolated while waiting for test results. If they are not tested they need to isolate for 10\* days.

#### Staff:

- Staff member will inform supervisor.
- Staff member will need to stay home isolated while waiting for test results. If they are not tested they need to isolate for 10\* days.

\*depending on guidance from Fond du Lac County Health Department.

### COVID SCREENING QUESTIONS

Please answer the following questions each day before students get on the bus or are dropped off at school:

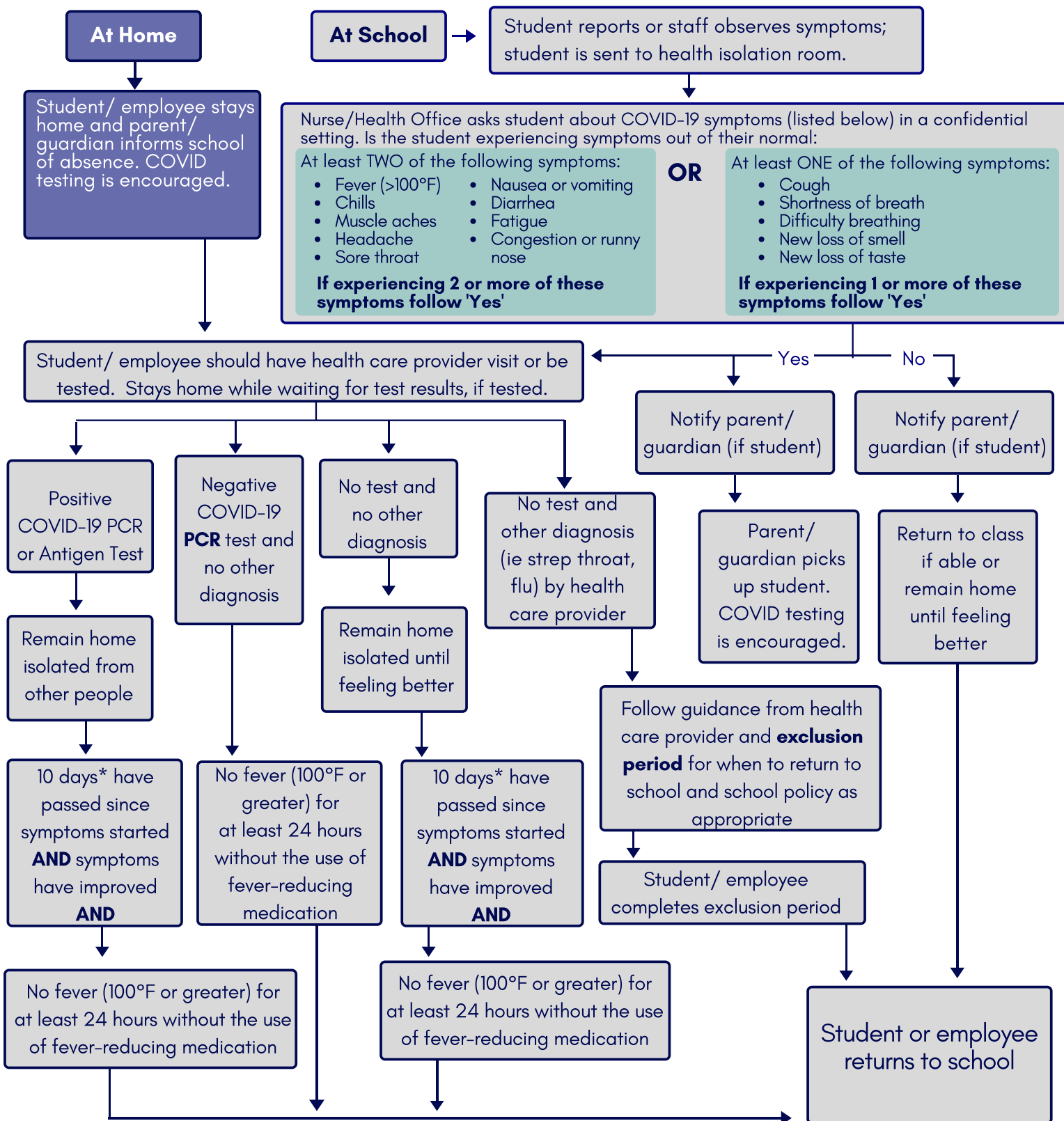
1. Has your student been in close contact with a confirmed case of COVID-19?
2. Has your student been experiencing a cough, shortness of breath or difficulty breathing, or a sore throat?
3. Has your student had a fever over 100 degrees in the last 24 hours?
4. Has your student had a new loss of taste or smell?

**If the answer to any of these is yes, please do not send your student to school. Contact your physician to see if they would like you to come in for COVID testing and/or call the local COVID clinic at 844-225-0147 for a free screening.**

# Return to School - Fall 2020

## STUDENT OR EMPLOYEE FEELS SICK

### COVID-19 RESPONSE PROTOCOLS



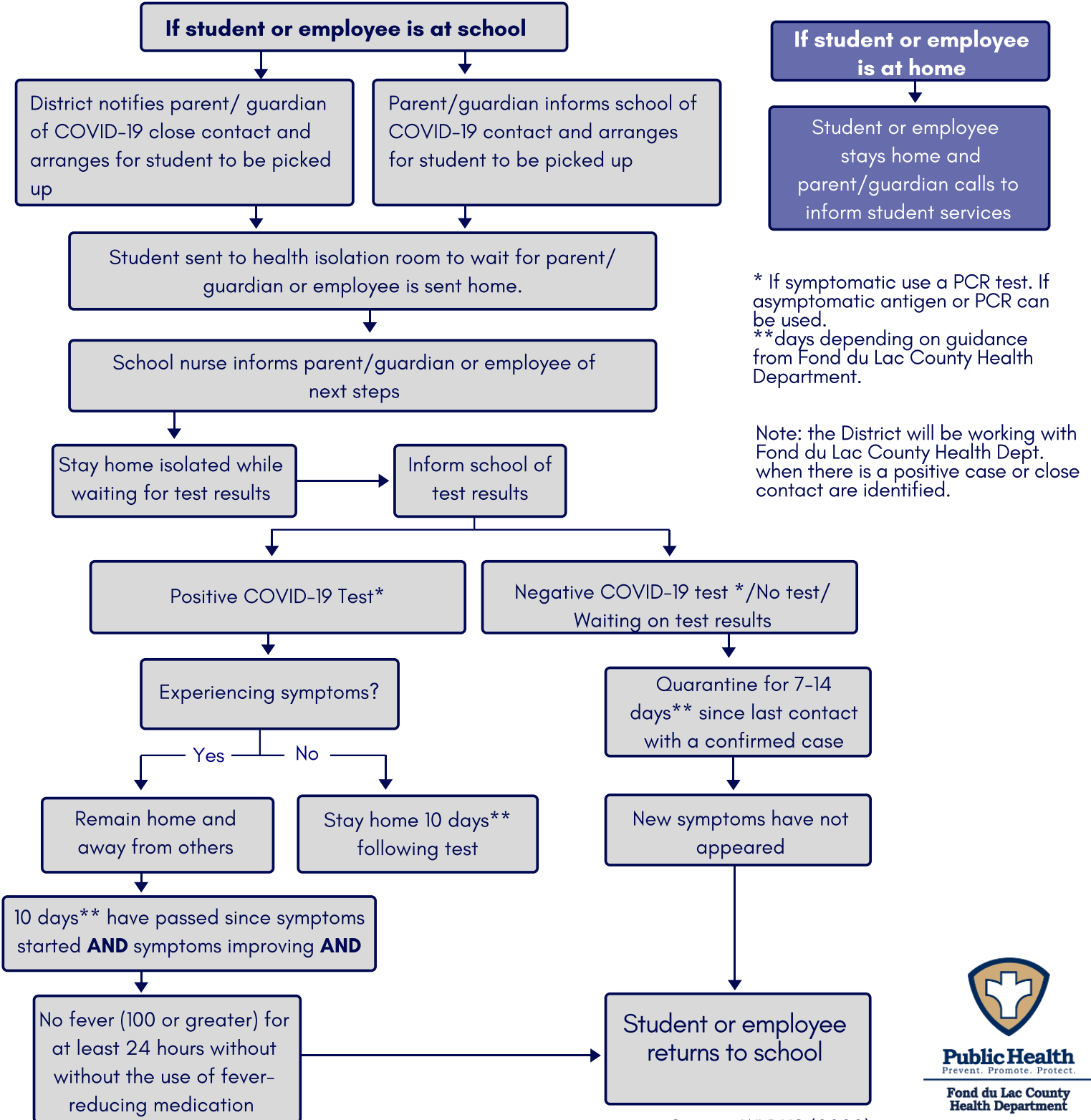
\*days depending on guidance from Fond du Lac County Health Department.

\*\* The District will be working with Fond du Lac County Health Dept. when there is potentially close contact of positive cases and deciding if further action is needed on a case by case basis.

# Return to School - Fall 2020

## STUDENT OR EMPLOYEE CLOSE CONTACT WITH CONFIRMED COVID-19 INDIVIDUAL

### COVID-19 RESPONSE PROTOCOLS



\* If symptomatic use a PCR test. If asymptomatic antigen or PCR can be used.  
 \*\*days depending on guidance from Fond du Lac County Health Department.

Note: the District will be working with Fond du Lac County Health Dept. when there is a positive case or close contact are identified.



**Public Health**  
 Prevent. Promote. Protect.  
 Fond du Lac County Health Department

Source: WI DHS (2020)

# Return to School - Fall 2020

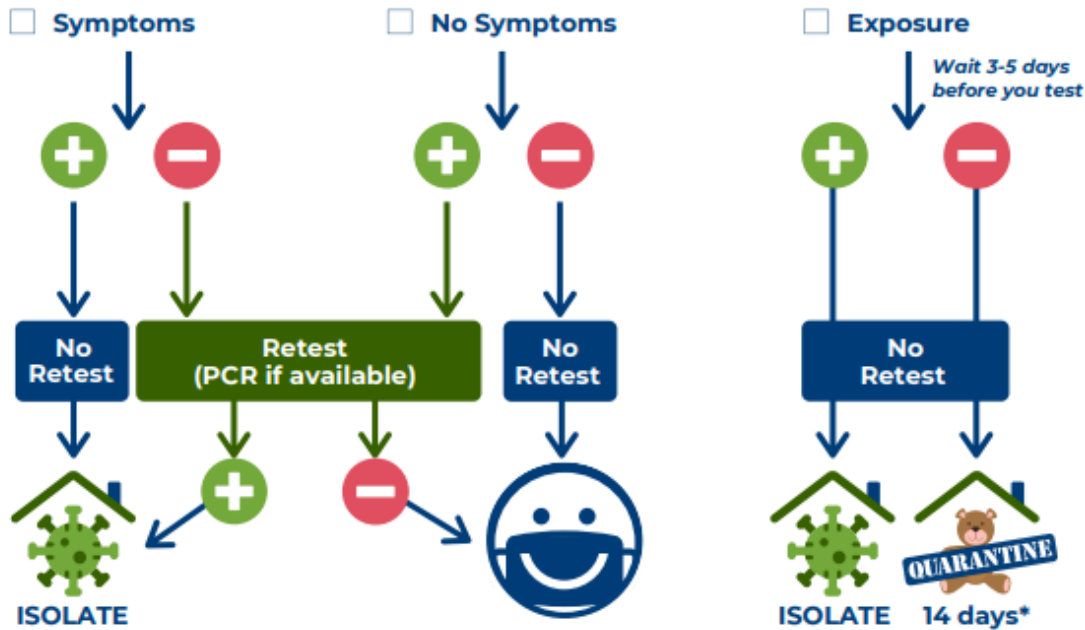
## COVID-19 Antigen Testing

### When is it best to retest?

Antigen tests are a common type of COVID-19 test that provides rapid results in about 15 minutes. While antigen tests deliver fast results, they are not as reliable as other tests. This makes them best suited for patients with symptoms or exposure where the virus is more easily detected. A second test is sometimes necessary to confirm the antigen test result and should be conducted as close to the antigen test as possible, definitely within 48 hours.



Select the criteria that is true:



For more information on COVID-19 testing in Wisconsin, visit: [www.dhs.wisconsin.gov/testing](https://www.dhs.wisconsin.gov/testing)

\* A 14-day quarantine remains the safest option, there is additional guidance to shorten quarantine further. For more information, visit the [COVID-19: Close Contacts webpage](#).



P-02830 (12/2020)

<https://www.dhs.wisconsin.gov/publications/p02830.pdf>

Source: WI DHS (2020)

Link to COVID-19 Testing What to Know document: <https://www.dhs.wisconsin.gov/publications/p02848.pdf>